



Ewuresi's Legacy

PHASE 2 - ROMAN RIDGE



Ewuresi's Legacy

JL Properties is known as The City's Favourite Developer, with a legacy of delivering premium residential homes and modern living spaces across Greater Accra since 2011.

Roman Ridge is one of Accra's most sought after residential neighborhoods, known for its prestige, connectivity, and cosmopolitan lifestyle. This distinguished location integrates serenity with city energy, offering a truly elevated living experience just minutes from key commercial districts, international schools, embassies, health facilities, and the airport. Here is our Ewuresi's Legacy Phase 2 Roman Ridge Development





Why This Project is Unique:

- **Prime Location:** Prestigious Roman Ridge address with seamless access to urban amenities.
- **Architectural Excellence:** Sophisticated design that blends modern aesthetics with functional layouts, crafted for comfort and elegance
- **Lifestyle Amenities:**
 - Planned outdoor pool.
 - Lounge.
 - Walking area.
 - Co-working spaces.
 - Landscaped gardens.
 - Children's play area.
 - 24/7 security.
 - Smart living features.
 - Ample secure parking.



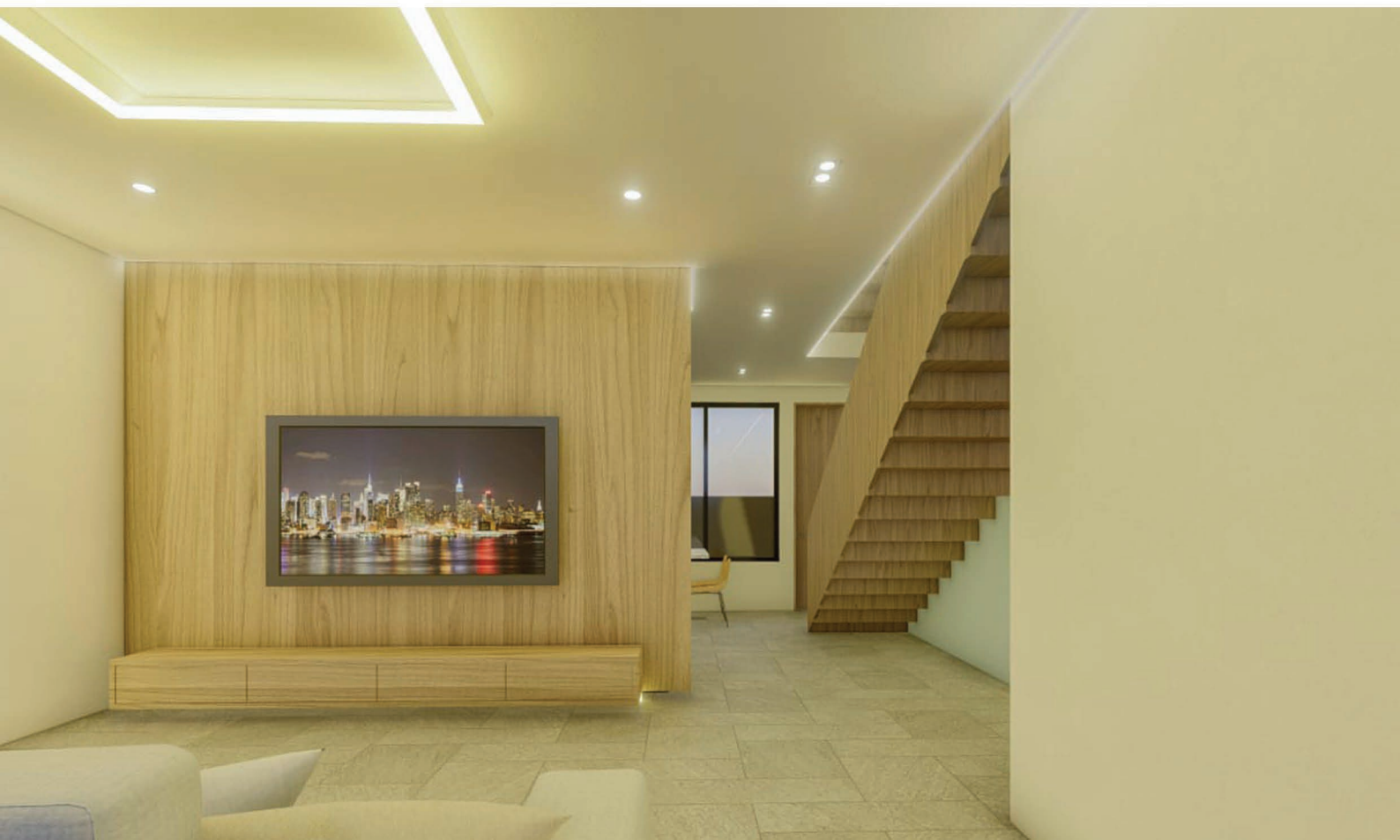
Live the life you envision Elevated,
Refined, and Unmistakably
Distinguished.

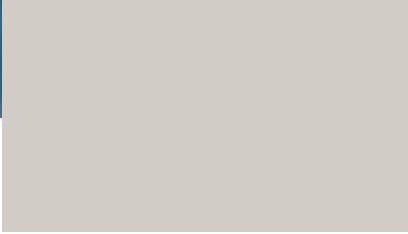




**Designed for Comfort.
Built for Luxury.**

Ewuresi's Legacy have been thoughtfully designed to reflect the aspirations of modern urban living





Price Tag

~~\$179,000~~

NOW \$149,000

2 Bedroom apartments

**Initials deposit of 30% with outstanding
spread for 18 months (interest free)**



Contact
CALL 0302 429993
www.jlpropertiesgh.com
Digital Adress- GA-247-7313
The City's Favorite Developer